











Muster-Feuerwehrlaufkarten

Landkreis Dachau

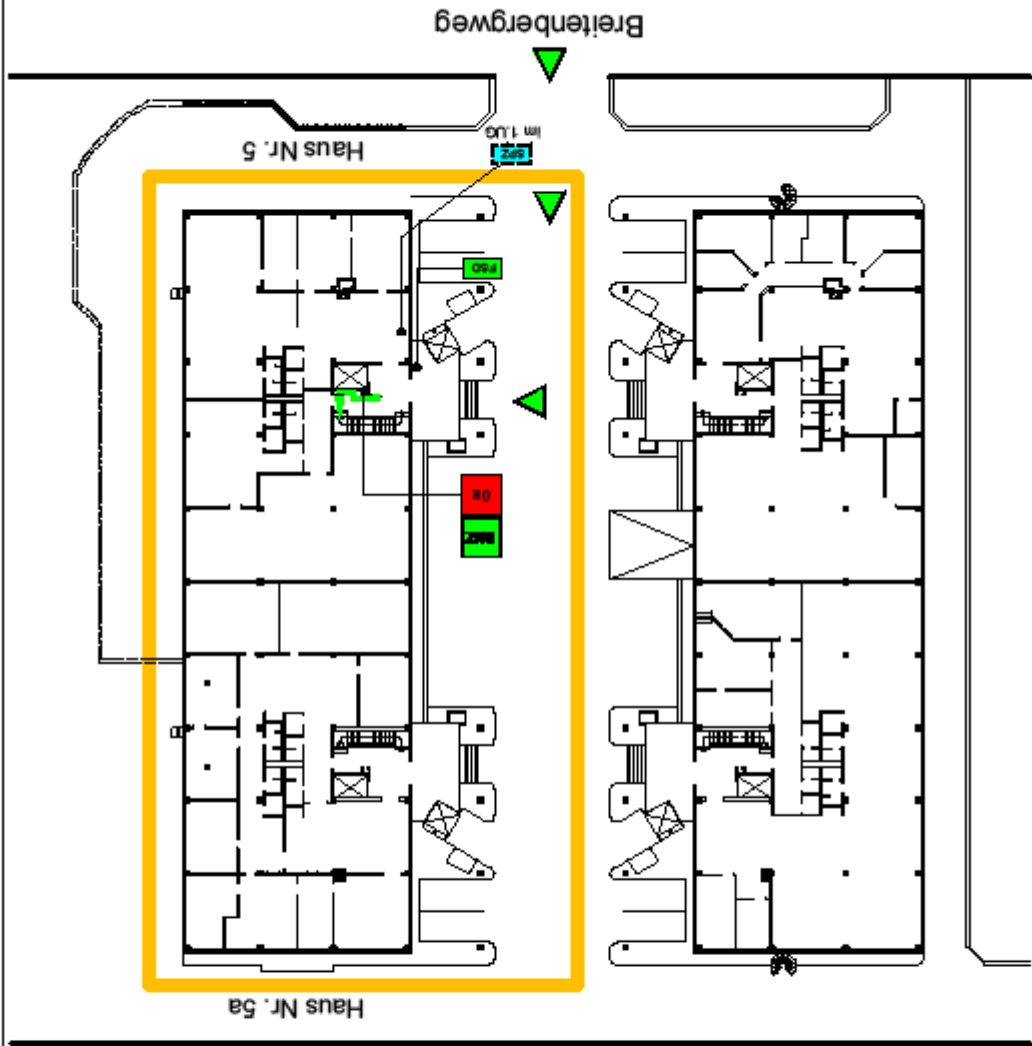


Symbole mit Farbgebung in Feuerwehr-Laufkarten

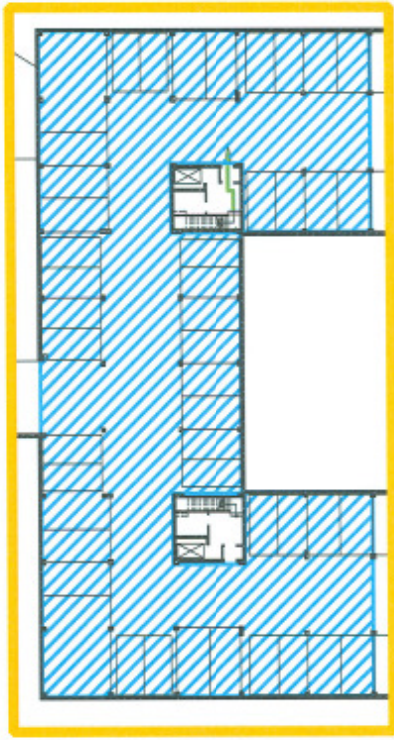
1.  Übertragungseinrichtung
2.  Brandmelderzentrale
(mit Feuerwehr-Bedienfeld)
3.  Feuerwehr-Schlüsseldepot
4.  Sprinklerzentrale
5.  Handfeuermelder
6.  Automatische Melder
(z.B. Rauchmelder = autom. Melder)
7.  Der Wirkbereich einer selbsttätigen/automatischen bzw. vorgesteuerten Löschanlage (Sprinkler - CO₂ Inergen)
8.  Überwachungsfläche für lineare Brandmelder
(z.B. Sensorkabel oder RAS-System)
18/1
9.  Anfahrt / Eingang
Einsatzweg vom Standort ausgehend
(BMZ)
10.  Orangefarbige Umrandung eines Bauabschnittes in dem sich der Auslösebereich einer Meldergruppe befindet
(z.B. Lagerhalle)

Melderguppe 1
Sprinklergruppe 1
Tiefgarage
2 UG

EQ



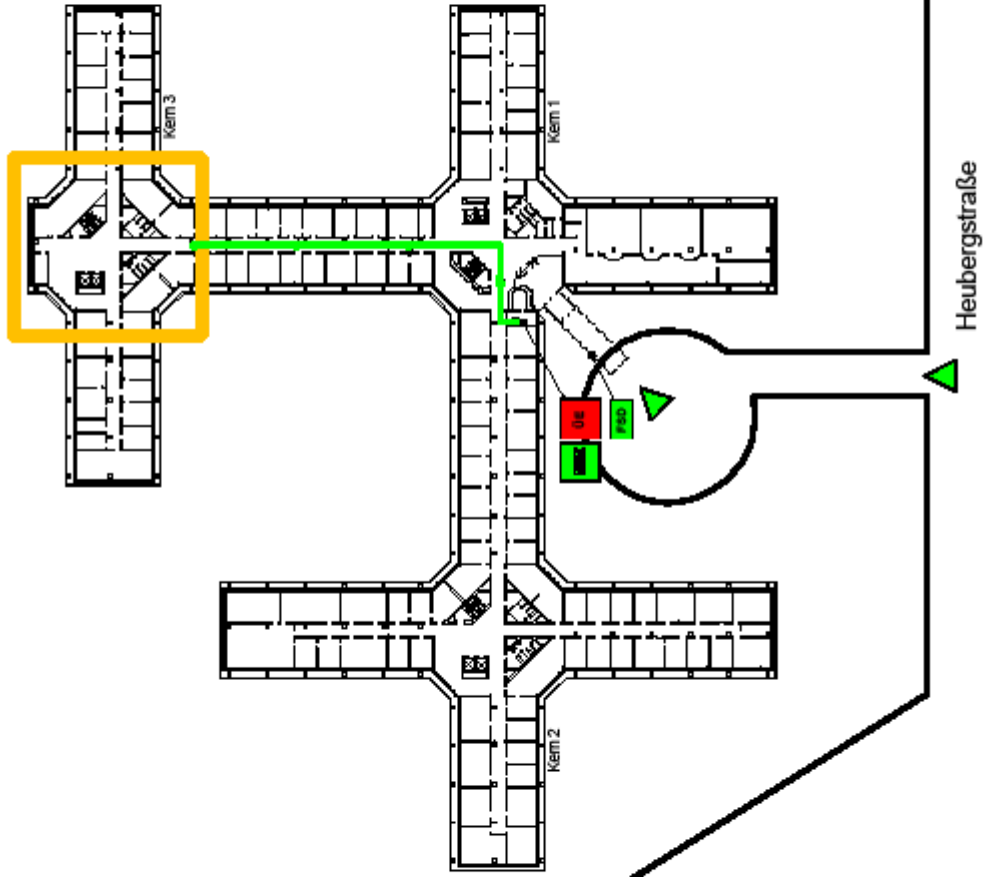
Melderguppe 1
Sprinklergruppe 1
Tiefgarage
2.UG



2.UG

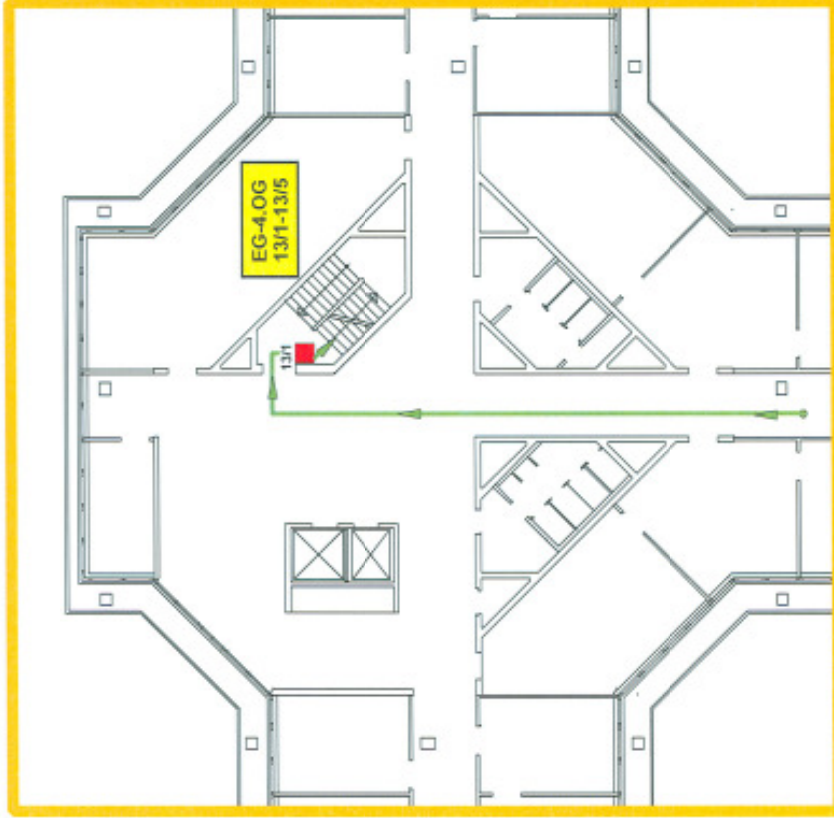
13

Meldergruppe 13
5 Handfeuermelder
Kern 3
Treppenhaus
EG-4.OG

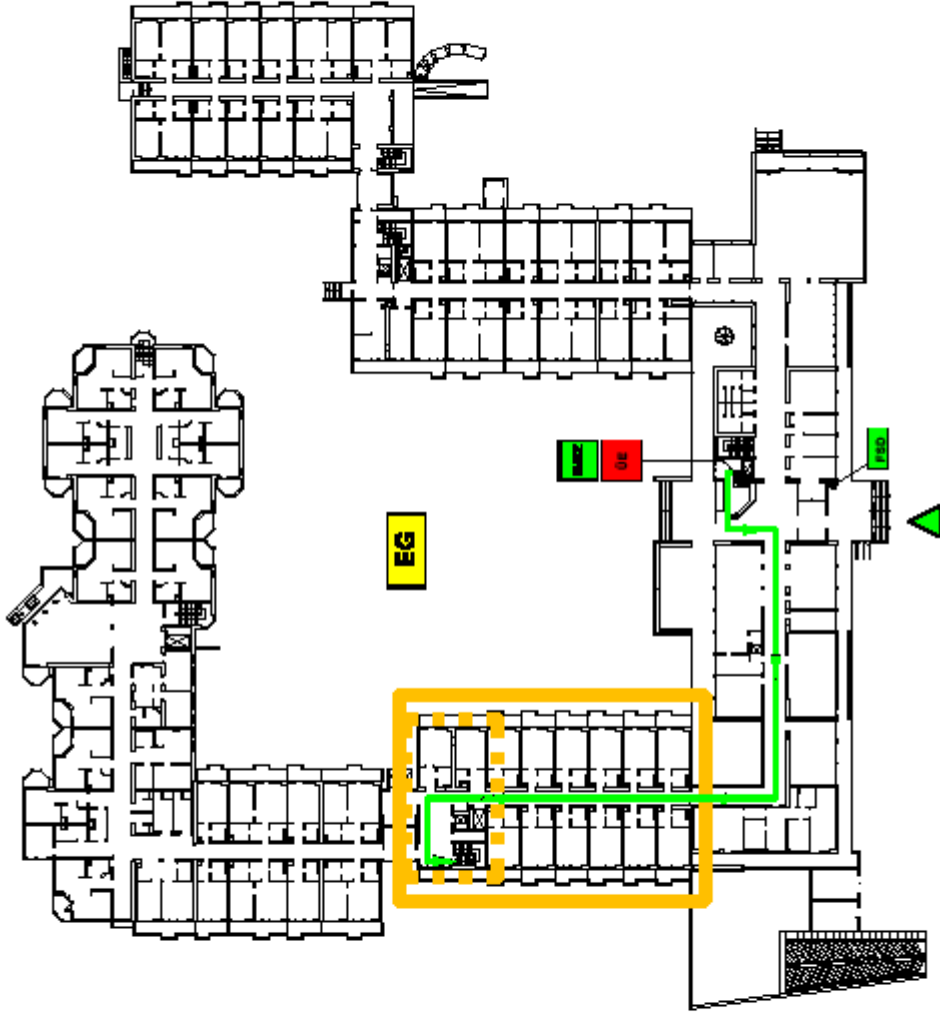


Meldergruppe 13
5 Handfeuermelder
Kern 3
Treppenhaus
EG-4.OG

EG

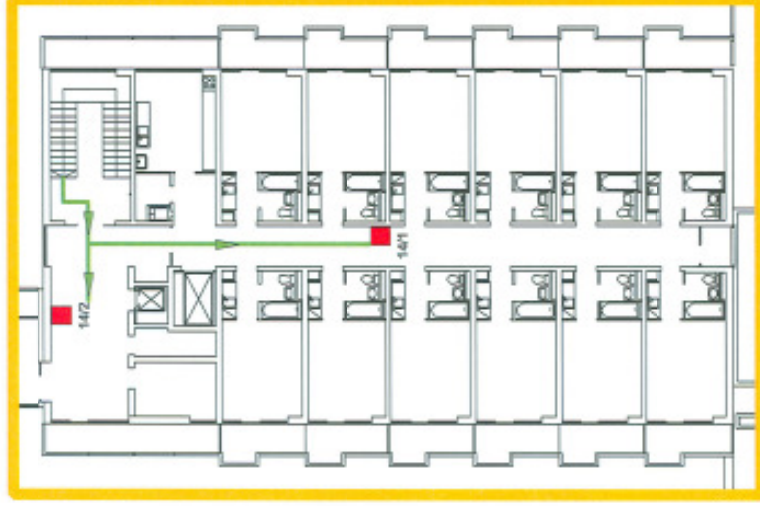
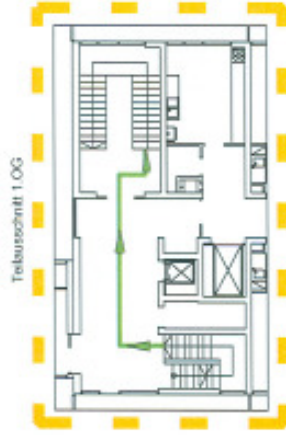


Meldergruppe 14
2 Handfeuermelder
Haus D
Flur
2.OG



Wittelsbacher Straße

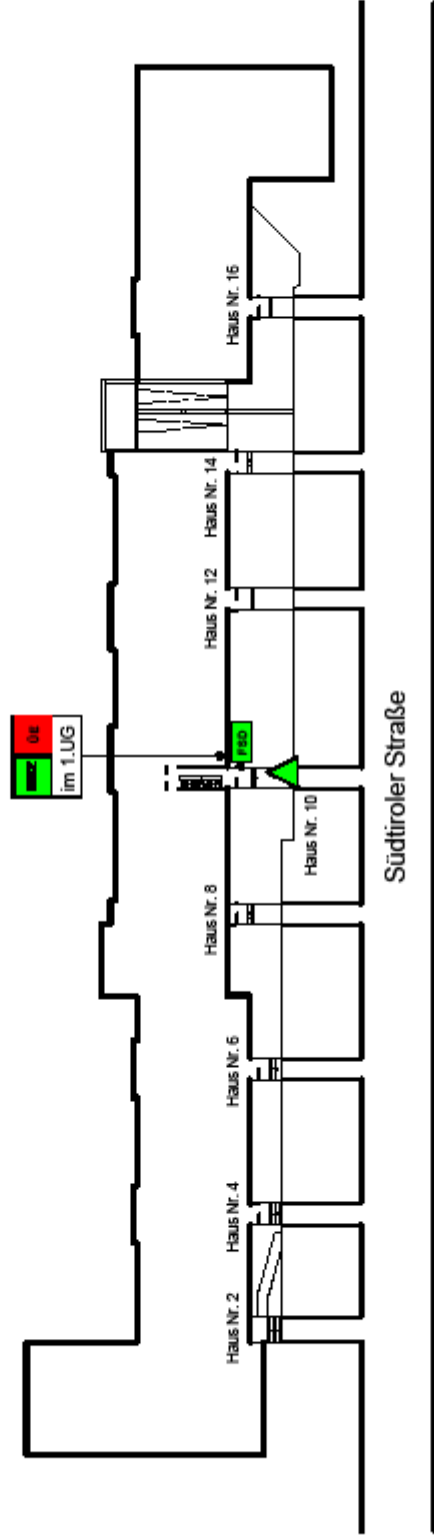
Meldergruppe 14
2 Handfeuermelder
Haus D
Flur
2.OG



2.OG

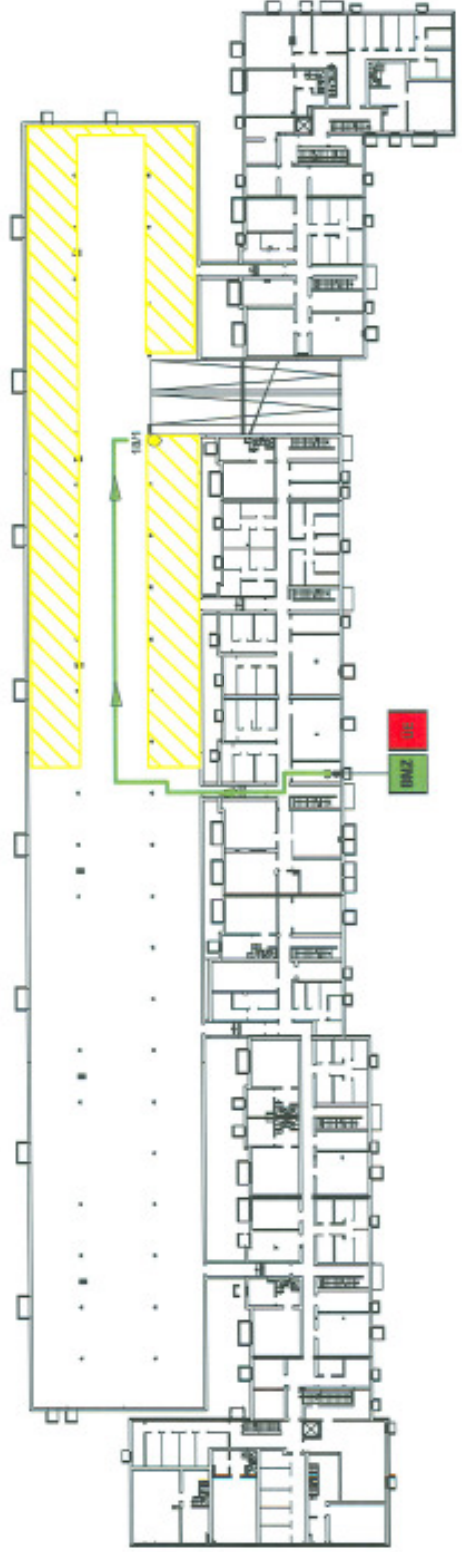
Meldergruppe 18
1 autom. Melder
Sensorkabel
Tiefgarage
1.UG

EG



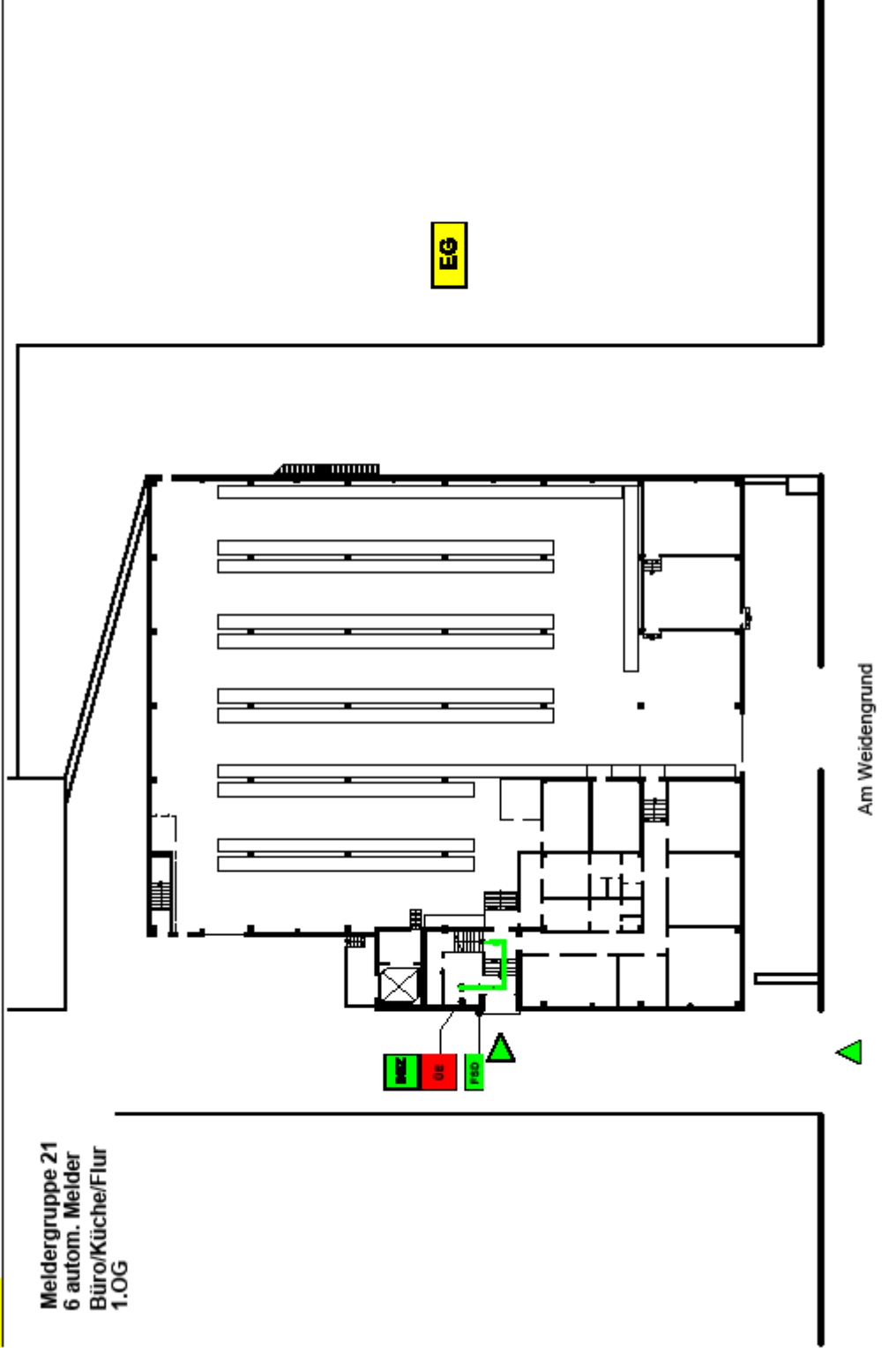
Melderguppe 18
1 autom. Melder
Sensorkabel
Tiefgarage
1.UG

1.UG



21

Meldergruppe 21
6 autom. Melder
Büro/Küche/Flur
1.OG



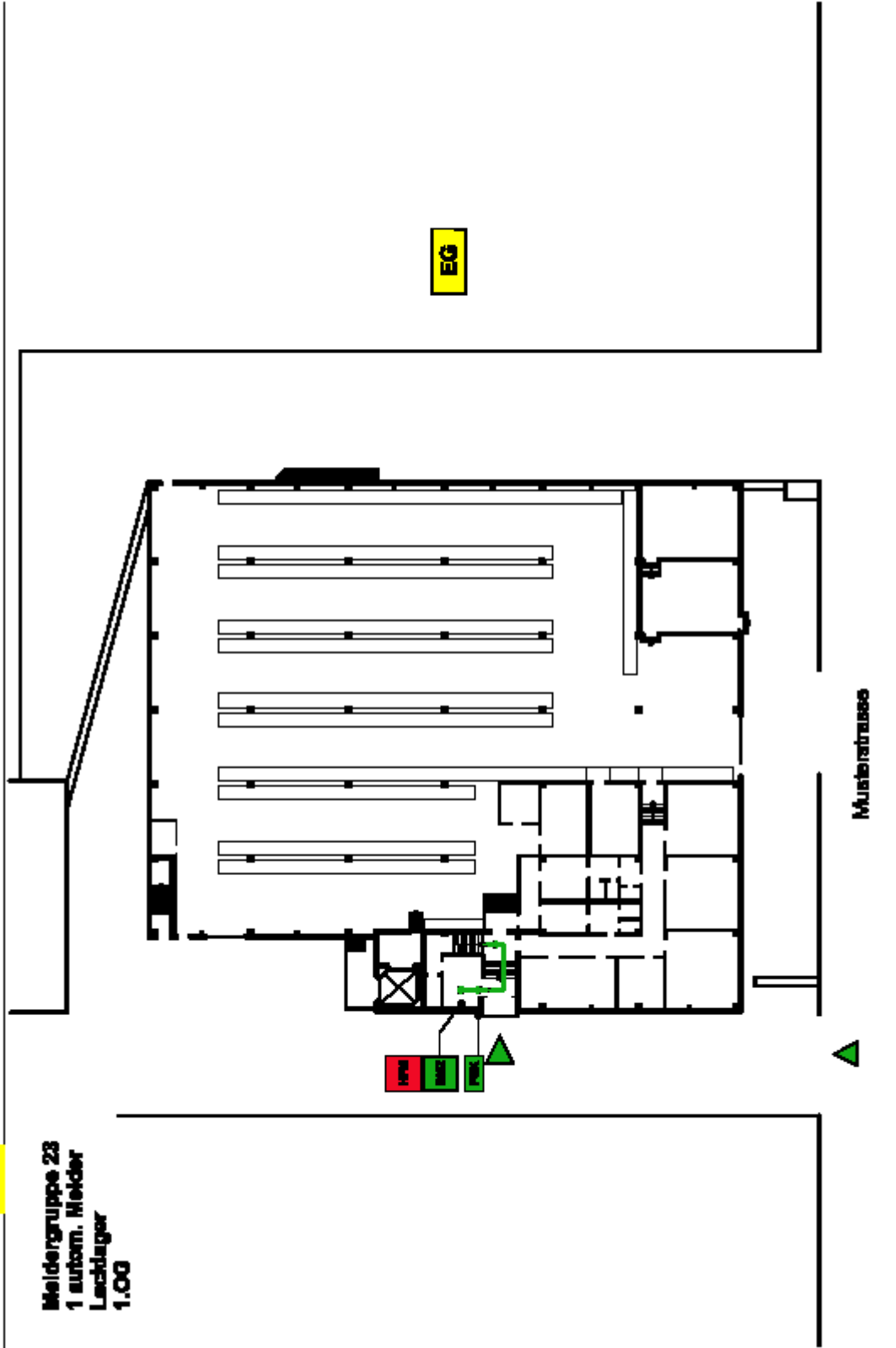
Melderguppe 21
6 autom. Melder
Büro/Küche/Flur
1.OG



1.OG

23

Melderguppe 23
1 autom. Melder
Leuchtlager
1.OG



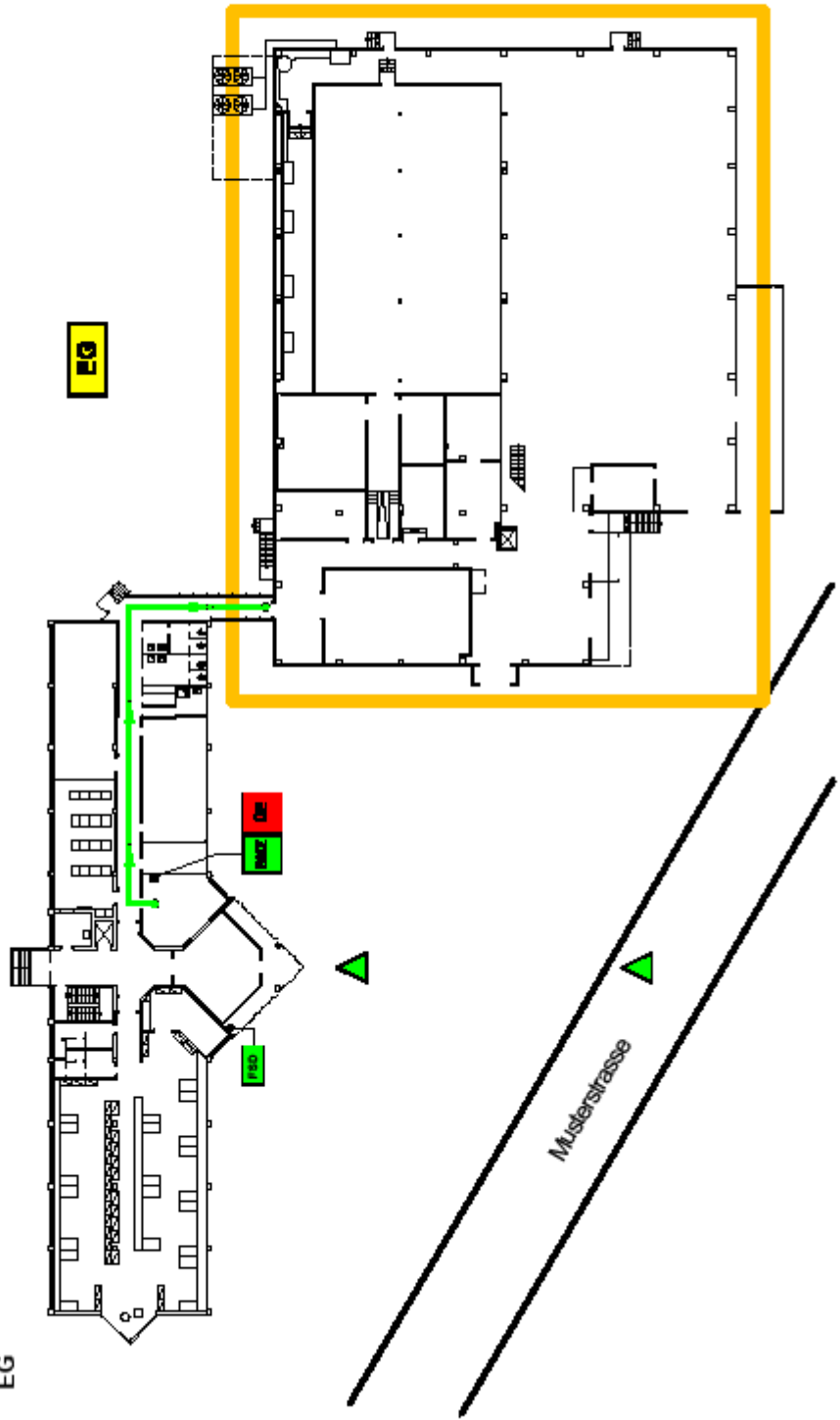
Meldergruppe 23
1 autom. Melder
Lacklager
1.OG



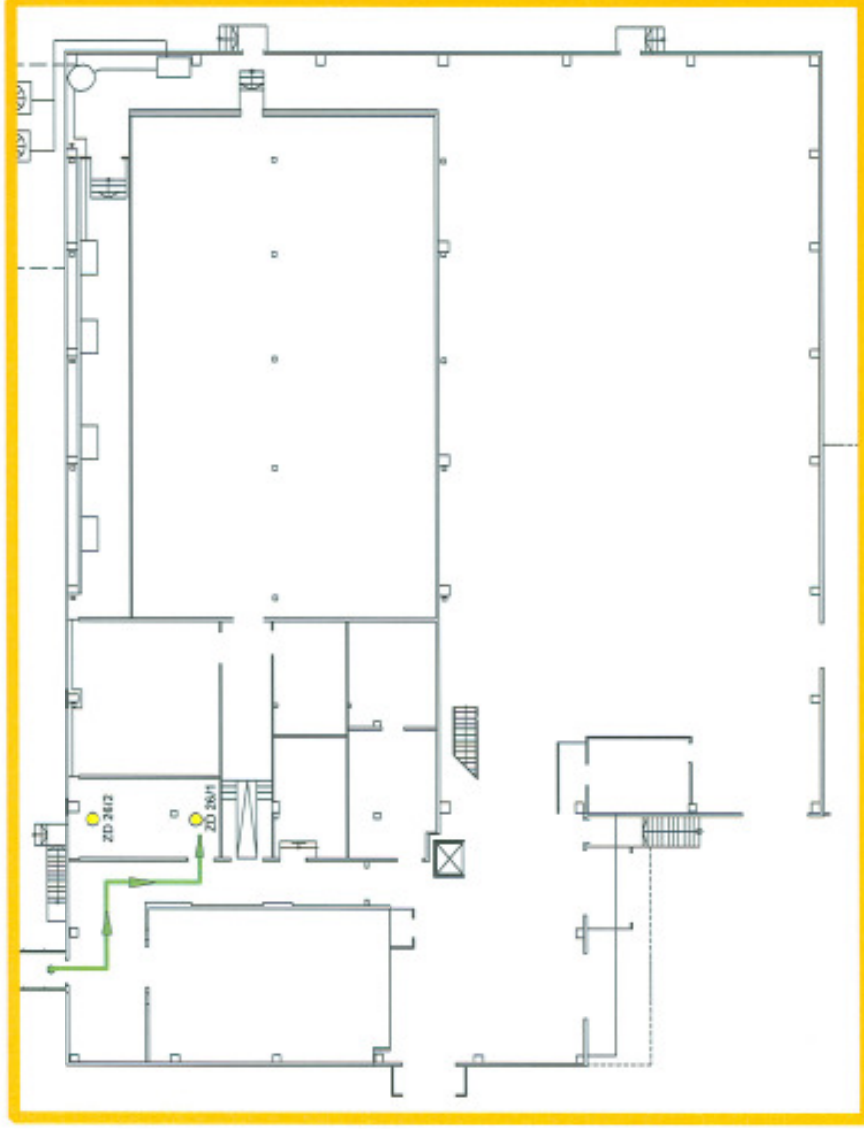
1.OG

EX - Bereich

Meldergruppe 26
2 autom. Melder
Zwischendecke
Lagerhalle
EDV-Raum
EG

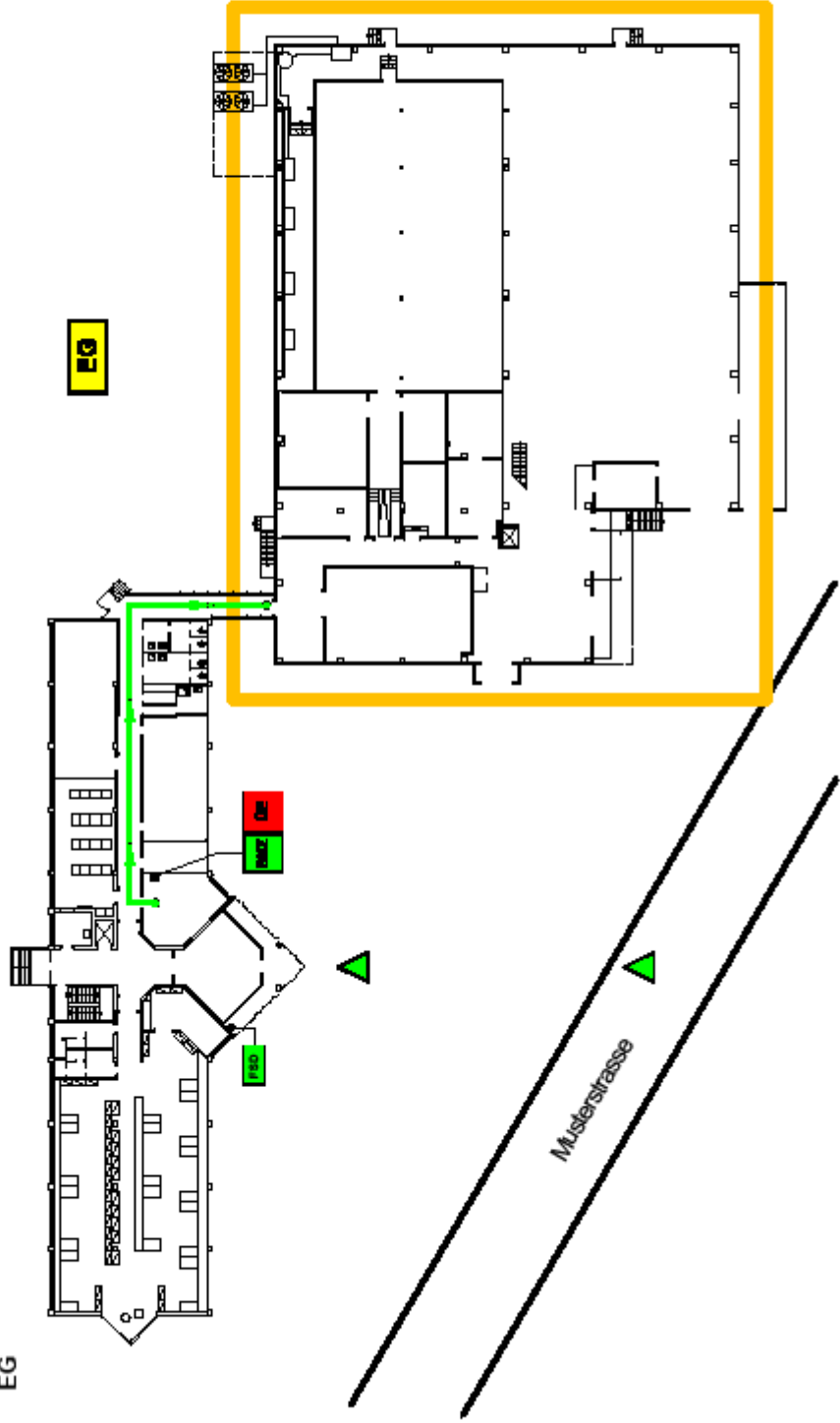


Melderguppe 26
2 autom. Melder
Zwischendecke
Lagerhalle
EDV-Raum
EG



EG

Meldergruppe 29
7 autom. Melder
Doppelboden
Lagerhalle
EDV-Raum
EG



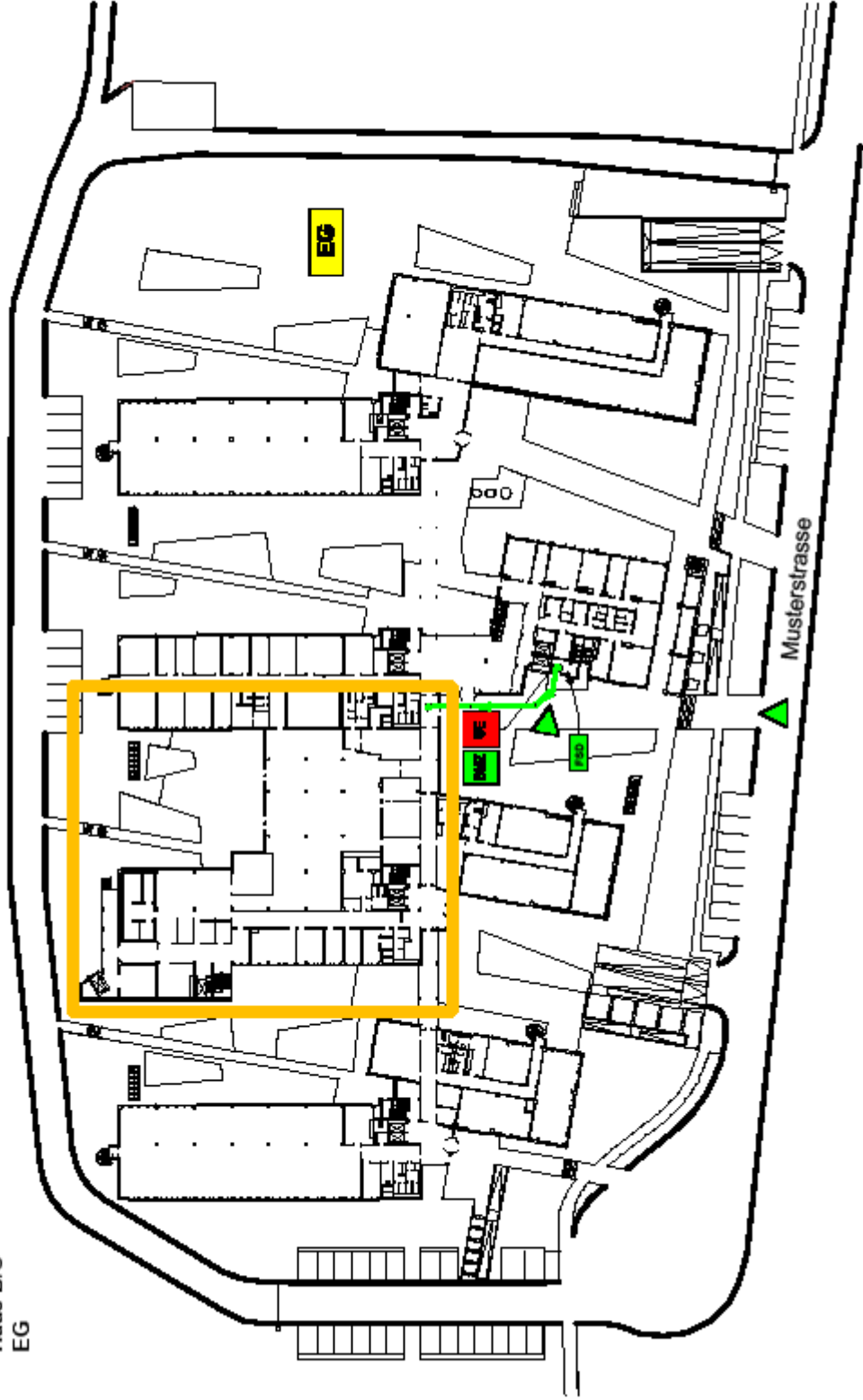
Melderguppe 29
7 autom. Melder
Doppelboden
Lagerhalle
EDV-Raum
EG



EG

BMZ-STANDORT

BMZ-Standort
Haus B/C
EG



BMZ-Standort
Haus B/C
EG



EG